

#### NOTES:

- 1) USE MINIMUM 3000 PSI STRENGTH CONCRETE AT 28 DAYS WITH 5-7% AIR ENTRAINMENT.
- 2) USE MINIMUM 60KSI YIELD DEFORMED REINFORCING STEEL.
- 3) FOUNDATION REQUIRES 1500 PSF RATED SOIL.
- 4) TOP OF CONCRETE AT BASEPLATE LOCATIONS TO BE LEVEL AND IN ONE PLANE  $\pm 1/8"$ .
- 5) DIAGONAL MEASUREMENTS, ENDWALL TO ENDWALL, MUST BE EQUAL WITHIN  $1/2"$ .
- 6) BASEPLATE AND LATERAL BUMPER ANCHORS SUPPLIED BY METTLER TOLEDO. USE BASEPLATES AND LATERAL BUMPERS AS TEMPLATES TO LOCATE EXPANSION BOLTS DURING SCALE INSTALLATION.
- 7) RAMP LENGTH: -PER LOCAL REGULATIONS  
- $1/2"$  SLOPE PER FOOT TYPICAL
- 8) 6" OF GRAVEL MAY BE USED UNDER APPROACHES AND SLAB AS AN OPTION TO IMPROVE DRAINAGE.
- 9) REBAR MINIMUM DEPTH OF COVER SHOULD BE IN ACCORDANCE WITH THE LATEST ACI BUILDING CODE REQUIREMENTS FOR STRUCTURAL CONCRETE (ACI 318-SECTION 7.7), UNLESS OTHERWISE SPECIFIED.
- 10) CONTRACTOR SUPPLIES:  
-EXCAVATION  
-CONCRETE AND FORMS  
-REINFORCING STEEL  
- $1 1/2"$  DIA CONDUIT  
-CURB ANGLE ASSEMBLIES (DETAIL G)  
-BUMPER PLATE ASSEMBLIES (VIEWS J-J & N-N)  
-END WALL ROCK GUARD (DETAIL G)  
-6" SCH. 40 PIPE.

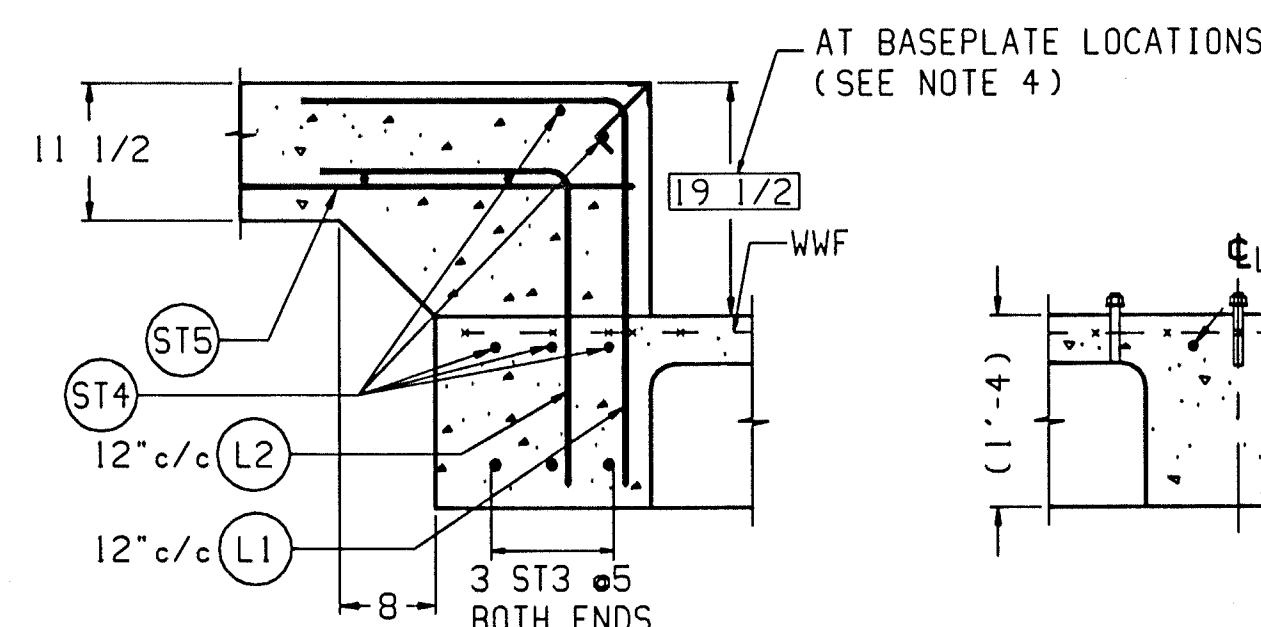
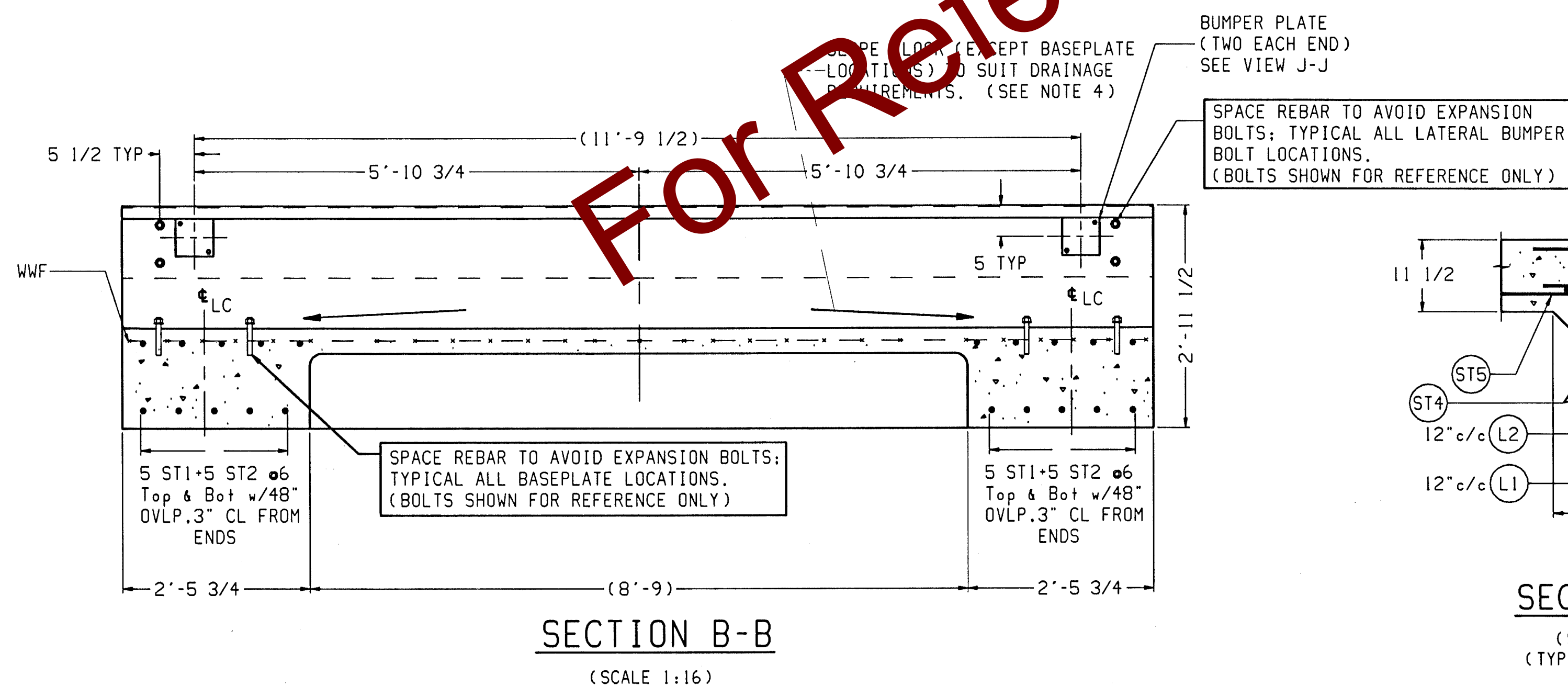
#### MATERIAL SUMMARY \*

CONCRETE (CU. YDS.)	37
REINFORCING STEEL (LBS)	3202
WWF: 6x6-W1.4xW1.4 (SQ. FT.)	865

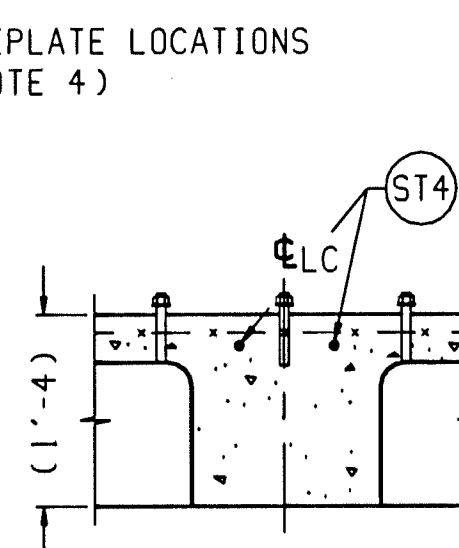
\* REFER TO SCALE GENERAL LAYOUT DRAWING FOR DECK CONCRETE AND REINFORCING STEEL SPECIFICATIONS.

#### REINFORCING STEEL SCHEDULE (A.S.T.M. A-615 GRADE 60)

SYM	QTY	SIZE	LOCATION, DIRECTION	A		
				B	WGT	
ST1	20	#6	FLOOR BEAMS, LONG.	40'-0"		1202
ST2	20	#6	FLOOR BEAMS, LONG.	26'-6"		796
ST3	6	#6	END FOOTERS, LATERAL	13'-3"		119
ST4	10		ENDS, LATERAL			138
	20	#5	APPROACHES, LATERAL	13'-3"		276
	8		FOOTERS, LATERAL			111
ST5	28	#5	APPROACHES, LONG.	9'-6"		278
L1	28	#5	APPROACH TO END TIES	2'-8"	2'-8"	156
L2	28	#5	APPROACH TO END TIES	2'-2"	2'-2"	127



SECTION C-C  
(SCALE 1:16)  
(TYPICAL END WALL)



SECTION D-D  
(SCALE 1:16)  
(TYPICAL)

REV	CHANGE	BY	DATE	SCALE 1:50	DATE 03/08/00	DRN MT APPD	TITLE 7531 FOUNDATION: BEAM SLAB 60' X 11', KD	UNLESS OTHERWISE SPECIFIED, ALL DIMENSIONS ARE IN INCHES, AND DIMENSIONAL TOLERANCES ARE:	FRACTIONAL .XX .02 .XX .005	DECIMAL .XX .02 .XX .005	ANGULAR .5° .5° .5° .5°	METTLER TOLEDO	TC204458	REV
-----	--------	----	------	------------	---------------	-------------	--	---	-----------------------------	--------------------------	-------------------------	----------------	----------	-----